

## PLATFORM FOR NETWORKS

*Global Risk Forum GRF Davos presents Platform for Networks.*

*The Platform serves as a forum and meeting place for interested persons, individual professionals, related associations and expert institutions engaged in risk and disaster management and in climate change mitigation and adaptation.*

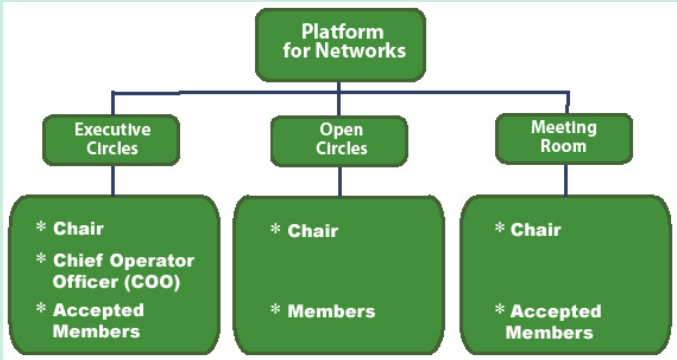
The Platform provides the opportunity to join a number of specific virtual Circles, which are actively managed by the members and are categorised according to a specific interest or common theme. Within the Circles the members are given the opportunity to develop, share and exchange knowledge, ideas, publications, experiences, best practice solutions and any other facet of learning with the intention of acquiring valuable information or seeking solutions to particular projects and problems.

*The nature of the Platform allows the Network to be used as a scientific, technical and operationally-focused global gathering where the membership benefits from the resources of all.*

The Platform is focused on achieving the following primary outcomes:

- Networking with people who share the same interests but who work in different professions, subjects, regions or countries.
- Engaging in discussions and conversations with members and gaining real-time feedback on queries and questions.
- Fostering professional alliances so they can move beyond the boundaries of experts, stakeholders or organisations and associations, therefore offering a network of networks.
- Providing a periodic assessment on established and emerging risks, periodic enquiries on cost-benefit analysis of projects, assessments of resilience to disasters and risks, and opinions on investments and national or international policies.

PLATFORM FOR NETWORKS



**Executive Circles**

They are created by Global Risk Forum GRF Davos, with membership by application or invitation only. The Chair is the figurehead of the group, the Chief Operating Officer is responsible for active support of the circle, and Members actively participate in discussions and information exchange.

**Open Circles**

Any member may create a new Open Circle and they are open for any member to join. The Chair is nominally the person who creates the circle and is responsible for circle support with the Members actively participating in discussions and information exchange.

**Meeting Room**

Any Member may form a Meeting Room and will automatically become the Chair. Membership consists of a select few Members and is by invitation only. The Meeting Room acts as a closed forum for project teams and working groups where the participants may interact in private.

To get involved please visit [www.grforum.org](http://www.grforum.org) and follow the **Platform** link, where you will be directed to the registration page. Once you have entered your details and confirmed your email you are ready to **Network** the **Platform**. Enjoy!

PLATFORM FOR NETWORKS